

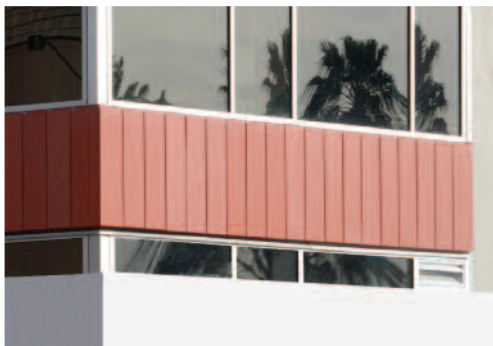
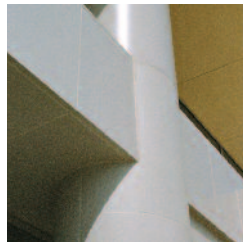
# PANEL SYSTEMS

07 42 00/CRL  
BuyLine 8840

MANUFACTURED BY C.R. LAURENCE COMPANY



- WALL PANEL CLADDING SYSTEMS ■
- CEILING PANEL SYSTEMS ■
- CANOPY PANEL SYSTEMS ■
- PERFORATED PANEL SYSTEMS ■



ISO 9001:2008 Certified  
**C.R. LAURENCE COMPANY**  
crlaurence.com | Worldwide Supplier

## CRL Wall Panel Cladding Systems

### *The Benefits of Using CRL Wall Panel Cladding Systems*

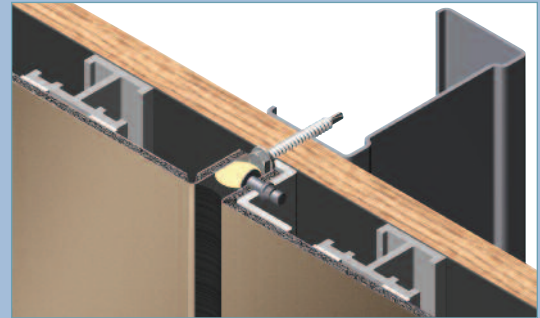
- Incredibly Strong, Lightweight Material
- Requires Less Complex Sub-Structuring
- Colors are Strongest, Brightest, and Longest Lasting on the Market Today
- Can be Curved and Bent into Complex Shapes
- Ideal for Exterior Canopies, Entryways, Soffits, Fascia Bands, Building Cladding, Modular Building Exteriors, Column Covers and Even Signage



CRL is proud to offer their Wall Panel Systems with four easy mounting options to choose from. They fabricate using ALPOLIC® Aluminum and Metal Composite Materials with the highest levels of product performance and reliability. These panels are extremely strong, offering the rigidity of heavy-gauge sheet metal in a lightweight material with superior flatness, vibration dampening, durability, and ease of maintenance. Their panels use LUMIFLON® resin which are the strongest, brightest, and longest lasting of any Aluminum Composite Material paint finishes on the market today.

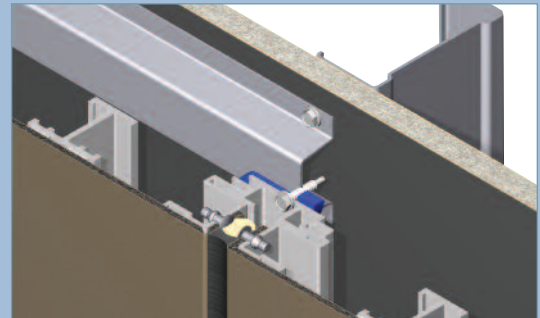
Office Buildings, sports venues, theaters, healthcare facilities, retail chains, restaurants, auto dealerships and more are using Wall Panel Systems on both the exterior and interior to create a distinctive image inspired by designers and architects to reach new heights in futuristic designs. Whether you're working on a new building or renovating an existing one, let CRL and their knowledgeable Technical Staff assist you with the right Wall Panel System. For additional information, contact CRL Architectural and Ornamental Metals Technical Sales at (800) 421-6144 in the U.S., (877) 421-6144 from Canada, or (323) 588-1281 International. Ask for Ext. 7770. You can also e-mail them through their web site at [crlaurence.com](http://crlaurence.com). From the home page click on Contact Us, and then click on Technical Sales for Architectural Metals Products.

### Standard Wet Seal System



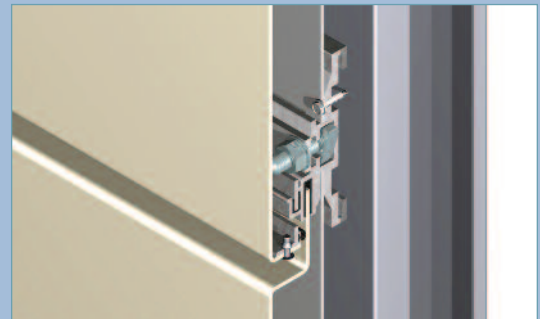
The Standard Wet Seal System has for years been the norm within the industry. It is easily installed and sealed with silicone sealant.

### Deluxe Wet Seal System



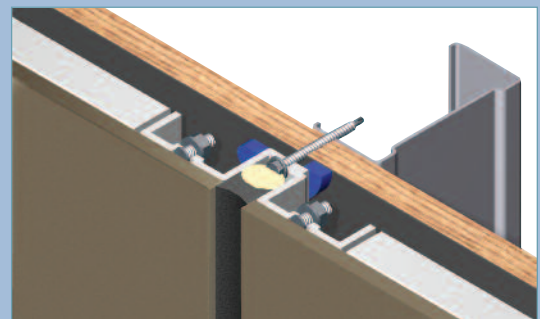
The Deluxe Wet Seal System is a fully framed and adjustable system providing more support for larger panels.

### Premier Dry System



The Premier Dry System provides a pressure-equalized dry joint which allows for expansion and contraction of the panels, while at the same time controls water intrusion.

### Heavy Plate Wet Seal System

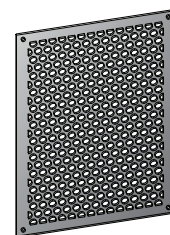


The Heavy Plate Wet Seal System provides more support with welded threaded studs to accommodate 1/4" (6.3 mm) thick panels. Designed especially for severe weather conditions.

## CRL Perforated Panel Systems



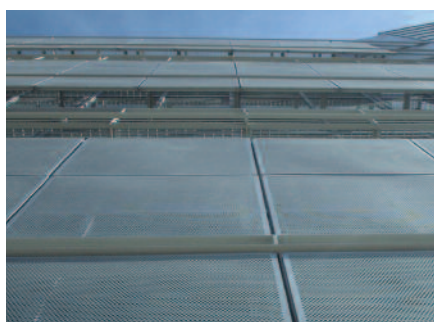
- Sun Control Systems Available in Aluminum and Stainless Steel
- Different Patterns and Perforation Diameters Can Be Designed to Suit Your Needs
- A Cost-Efficient and Attractive Building Addition



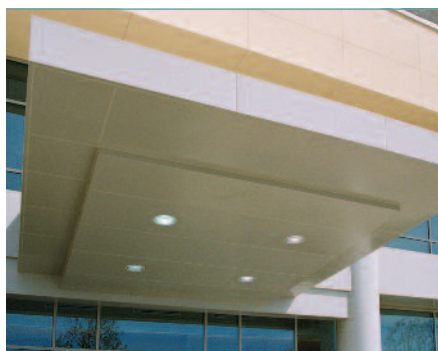
CRL Perforated Panel Systems provide a unique look to any modern edifice. Tastefully designed and skillfully manufactured at CRL's own Los Angeles facility, these Perforated Panels add privacy, and can also act as a sunshade to reduce interior heat. Strategically placed panels can give an older building a newer, more modern look, while at the same time serving to increase the efficiency of cooling systems. They are available in any number of finishes and perforation patterns, and can be retrofit to building without major structural reconfiguration. CRL engineers will assist with design and installation plans to make your project a cost-efficient and attractive building addition.

For additional information, contact CRL Architectural Technical Sales at (800) 421-6144 in the U.S., (877) 421-6144 from Canada, or (323) 588-1281 International. Ask for Ext. 7770. You can also e-mail them through CRL's web site at [crlaurence.com](http://crlaurence.com). From the home page click on Contact Us, and then click on Technical Sales for Architectural Products.

**Finishes Include:** • Brushed Stainless • Polished Stainless • Non-Directional • Custom Paint



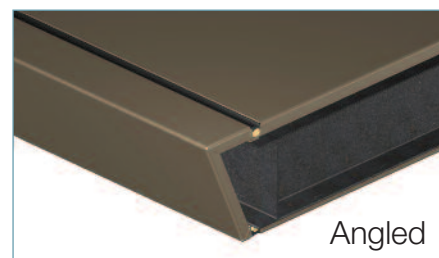
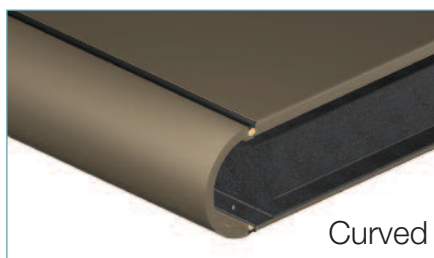
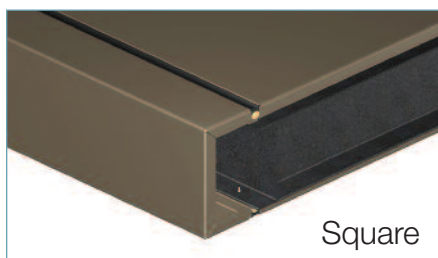
## CRL Canopy Panel Systems



- Choose From Aluminum Composite Material, Metal Composite Material, or Solid Metal
- Three Attaching Systems Available
- Custom Fabricated to Your Specifications

CRL Canopies are available in three attaching systems; Standard Wet Seal, Deluxe Wet Seal, and Premier Dry Seal. Canopy attachments can be fabricated in different configurations depending on the anchoring substrate. CRL Engineers will evaluate the particular job and design a Canopy that best meets the criteria. Several panel options are available; Aluminum Composite Material, Metal Composite Material, and Solid Metal Material. For more information or planning help, contact their Architectural and Ornamental Metals Technical Sales Department at (800) 421-6144 in the U.S., (877) 421-6144 from Canada, or (323) 588-1281 International, and ask for Ext. 7770.

### *Available to Accommodate Many Configurations*





### CRL Sunshade Systems

- Efficient Light Transmission
- Stock and Custom Models Available
- Aluminum or Stainless Steel Construction With Powder Paint or Kynar® Available



### CRL Spider Fittings

- For Fin or Post Supported Applications
- Made of 316 Alloy Stainless Steel in Two Attractive Finishes: Brushed or Polished Stainless
- For Use With 1/2" to 13/16" (12 to 20 mm) Tempered Glass



### CRL Structural Glass Railing System with Gate

- Variety of Applications: Mezzanine Railings, Stairways, Escalator Alcoves, Windbreaks, Observation Decks, Balustrades
- Systems for 1/2" and 3/4" (12 to 19 mm) Thick Tempered Glass
- Custom Fabricated to Your Dimensions, or Stock Lengths Available



### CRL Glass Awning System

- Complete Hardware Package for 9/16" (14 mm) Thick Tempered, Laminated Glass Awnings
- All High Grade Stainless Steel Components for Panel Sizes Up to 48" (1219 mm) Wide and 72" (1829 mm) Long

**CRL Specialty Catalogs - Can be ordered, viewed or downloaded online at [crlaurence.com](http://crlaurence.com)**



Architectural Metals  
**AM09**



Architectural Hardware  
**AH11**



Commercial Door Hardware  
**LP11**



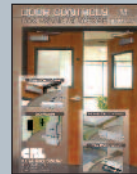
Frameless Shower Door Hardware and Supplies  
**SD10**



Hospitality & Service Hardware  
**HS07**



Architectural Railing Systems  
**HR11**



Door Controls Hardware and Accessories  
**DC07**



Transaction and Security Hardware  
**TH10**



Glass Bonding System  
**GB10**

### Technical Sales



### For All Your Project Requirements

C.R. Laurence Company has a Technical Sales Department to assist with design plans and installation questions. Your job can be made easier with the help of CRL's Technical Sales Representatives who are trained in the newest Hardware Systems, and can offer you detailed diagrams and layout sheets. **Ask for Extension 7770.**

### VISIT THE WORLD of [crlaurence.com](http://crlaurence.com)



- Access to All CRL Products Through CRL's Easy-to-Use A to Z Product Index
- View All Current CRL Catalogs Online
- New CRL Products and Services
- Technical Articles and Product Support
- Ordering and Shipping Information
- Help in Using the Site
- CRL Locations with Addresses, Directions, Phone and Fax Numbers
- Direct E-Mail Connections to CRL Departments
- Account Policies and Credit Terms
- A Calendar of Industry Trade Shows

### FOR MORE INFORMATION ON OTHER CRL PRODUCTS SEE SWEET'S SECTIONS:

- 05 58 00/CRL-8838 COLUMN COVERS
- 05 73 00/CRL-5341 STRUCTURAL HEAVY GLASS RAILING
- 08 42 00/CRL-1676 ENTRANCES & STOREFRONTS
- 08 42 00/CRM-4545 ENTRANCES & STOREFRONTS: Facilities & Owners
- 08 44 26.11/CRL-8621 STRUCTURAL GLASS CURTAIN WALLS
- 08 56 59/CRL-4964 SERVICE WINDOWS
- 08 71 00/CRL-3069 DOOR HARDWARE
- 08 71 00.14/CRL-7154 STACKING PARTITION SYSTEMS
- 10 28 19/CRL-3068 TUB & SHOWER DOOR ENCLOSURES
- 10 71 13/CRL-8843 EXTERIOR SUN CONTROL DEVICES
- 11 18 00/CRL-6331 BULLET-RESISTANT PROTECTION
- 11 46 16/CRL-5592 SNEEZE GUARDS/PARTITION POSTS

SWEET'S 10-Wall Panels, Cladding